

Embedded Business Intelligence Dashboards in WebTMA7

UC
25 YEARS
OF COMMUNITY, PARTNERSHIP, AND GROWTH



Adam Deatherage

Vice President of Operations

Adam.Deatherage@tmasystems.com

Originally from Tulsa, OK, he graduated from the University of Colorado with a Bachelor of Arts in Public Relations and received his MBA from the University of Maine. With over 15 years of experience in software consulting and personnel management, his experience at TMA has included roles in Client Support, Professional Services, Consulting, and Sales. Adam is primarily responsible for the management of Implementations, Consulting, Migrations, and Technical Services within the Professional Services organization.



Agenda

1. Introduction to Embedded Analytics
2. Additional Features
3. Review Dashboards
4. Demonstration of the Analytics Dashboards in WebTMA



Introduction

- Utilizing Embedded Analytics allows you to see your data for different Categories or Filters without having to create a specific Report or Dashboard in WebTMA.
- Also, with embedded analytics you can “slice” the data via the filtering options to quickly change the data displayed in the Charts and drilldowns without having to rerun a report.
- TMA does all the heavy lifting. We have already built and designed the dashboards



Additional Features

- The Logi Analytics window is designed in WebTMA7's new User Interface
- You can export the entire page to PDF with the click of a button. Easy presentations!
- You can export all the raw data into Excel for any further analysis
- Can be branded with your logo
- Each Dashboards has a set of filters such as Start/End Dates, Repair Center, Department, Building, Trade, WO Type, etc. Meaning you can immediately parse the data however you want to see it
- TMA has already built a set of dashboards and will continue adding based on client needs and feedback
- Can drill down multiple levels, all the way to individual records

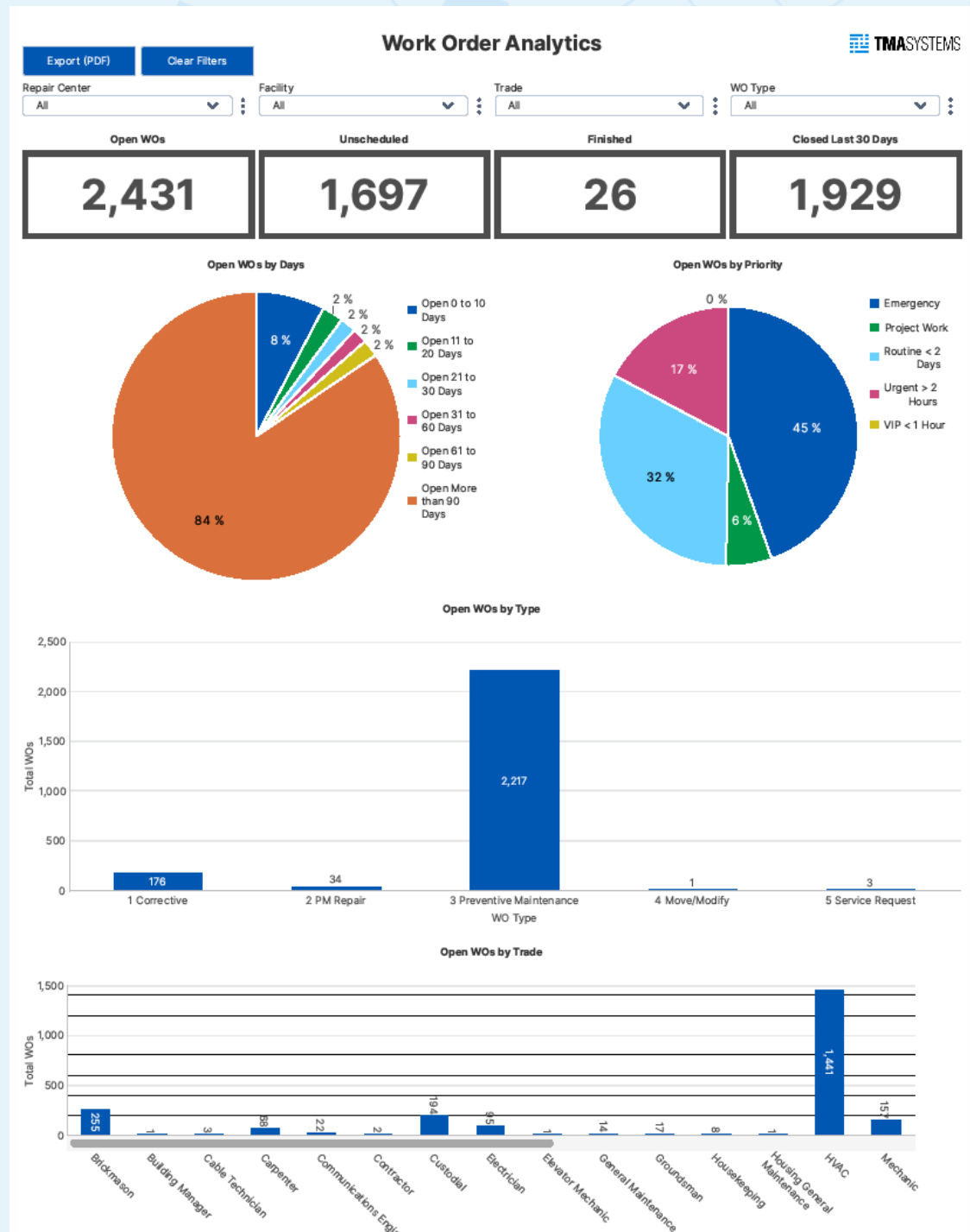


ADDITIONAL
FEATURES



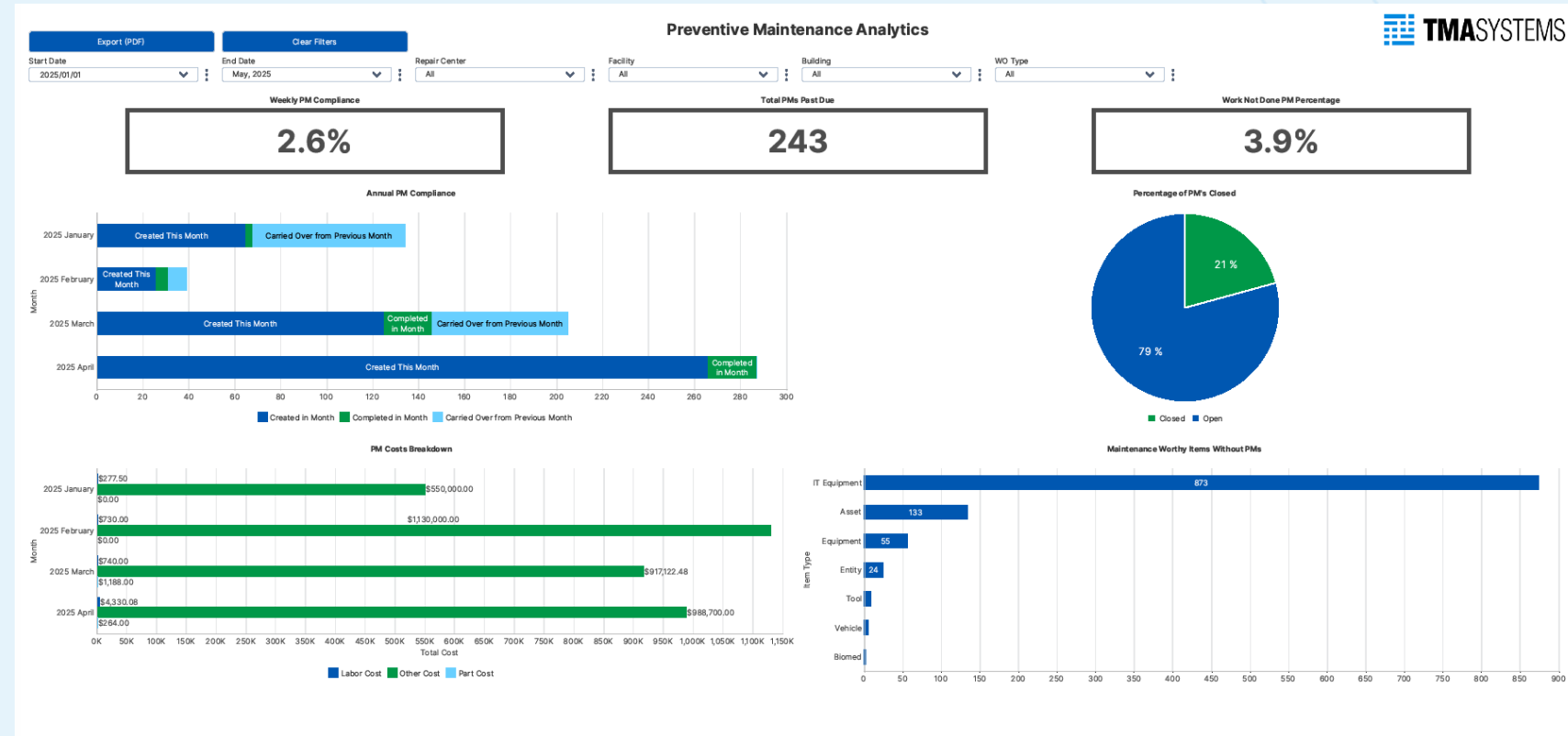
Work Order Analytics

- All Open WO's
- Unscheduled WO's
- Finished WO's
- Closed Last 30 Days
- Open WO's by Days
- Open WO's by Priority
- Open WO's by Type
- Open WO's by Trade



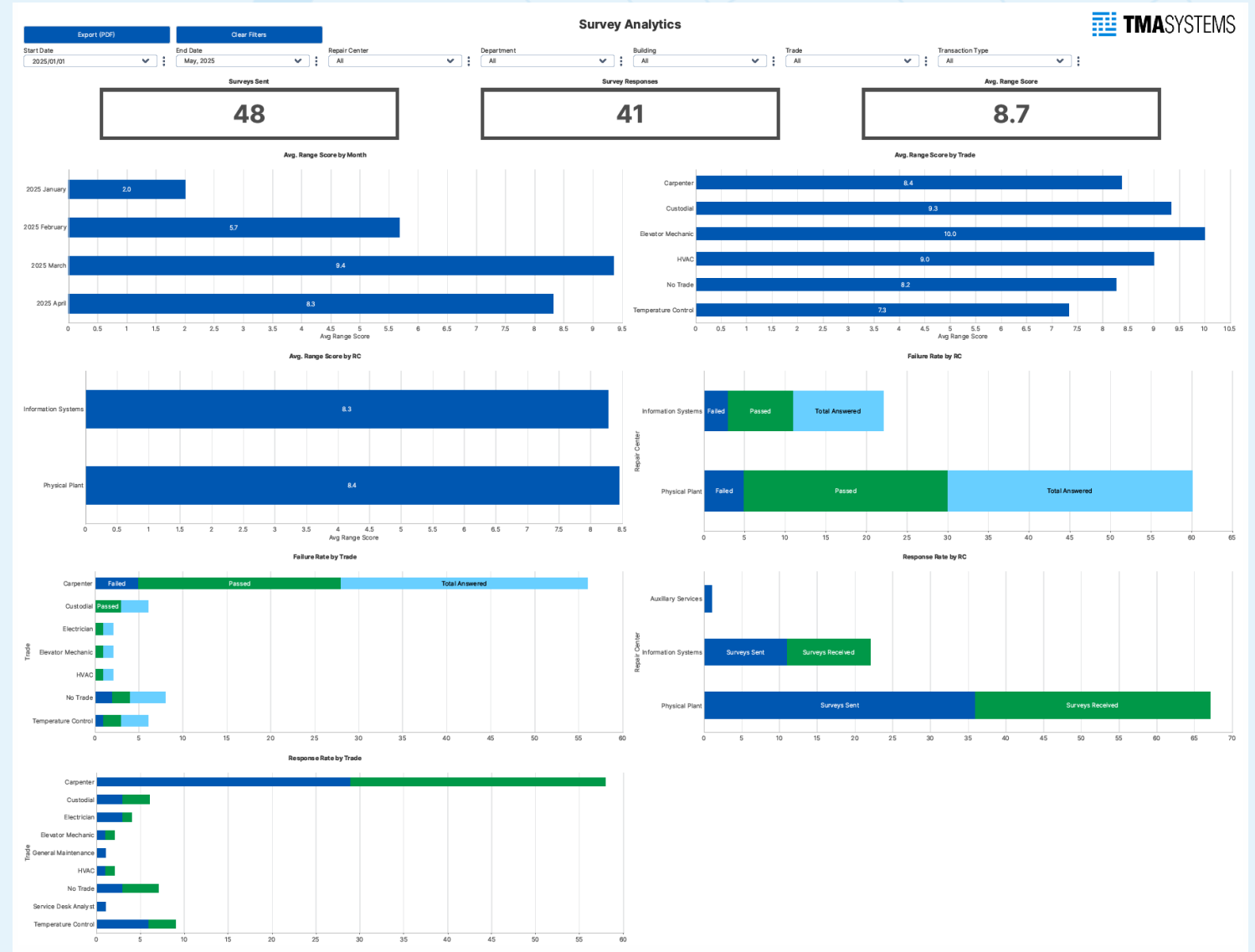
PM Analytics

- Weekly PM Compliance
- Monthly PM Compliance
- Annual PM Compliance
- Past Due PM's
- Work Not Percentage
- Percentage of PM' Open/Closed
- PM Costs Breakdown
- MWI's without PM's



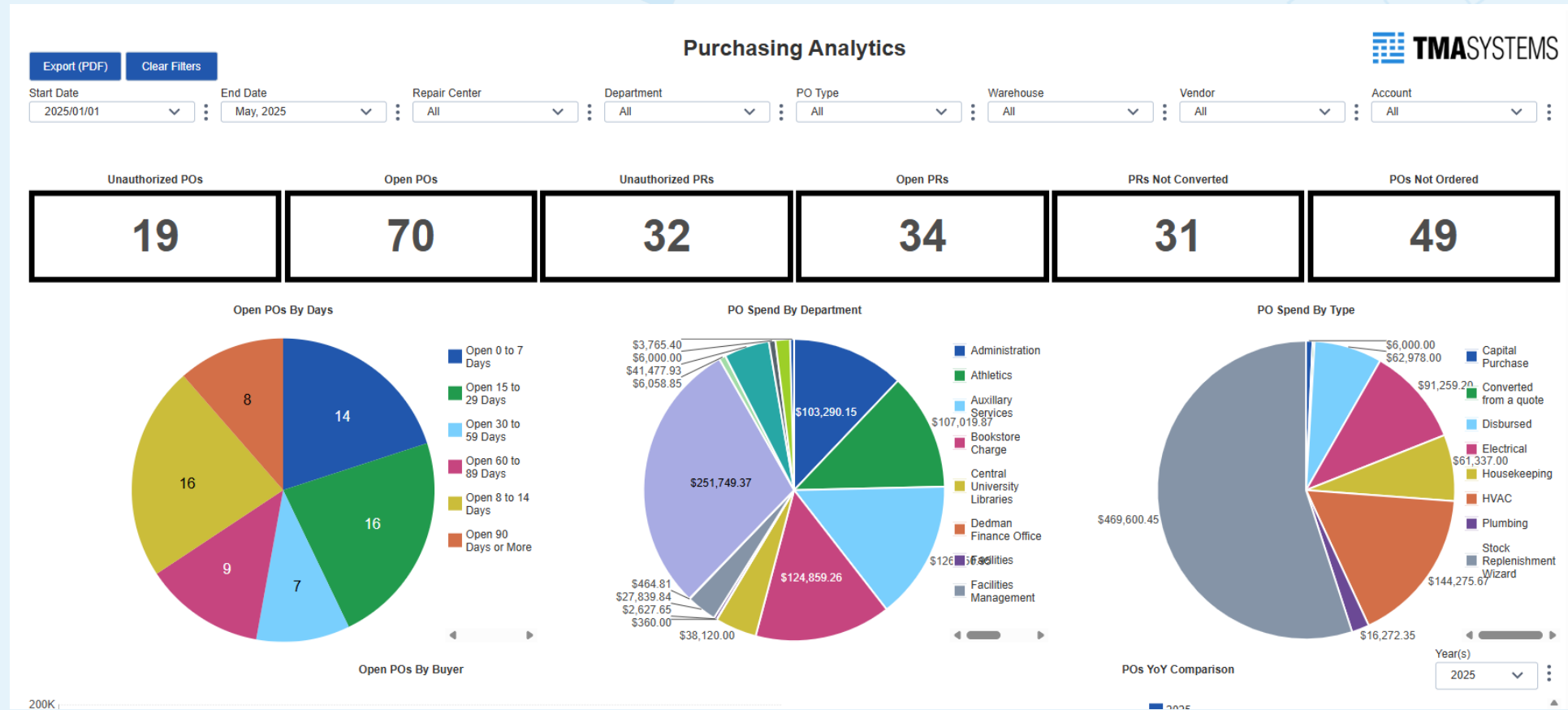
Customer Surveys

- Surveys Sent/Surveys Responded
- Average Survey Score
- Average Score by Month
- Average Score by Trade
- Average Score by Repair Center
- Failure Rate by Trade
- Failure Rate by RC
- Response Rate by Trade



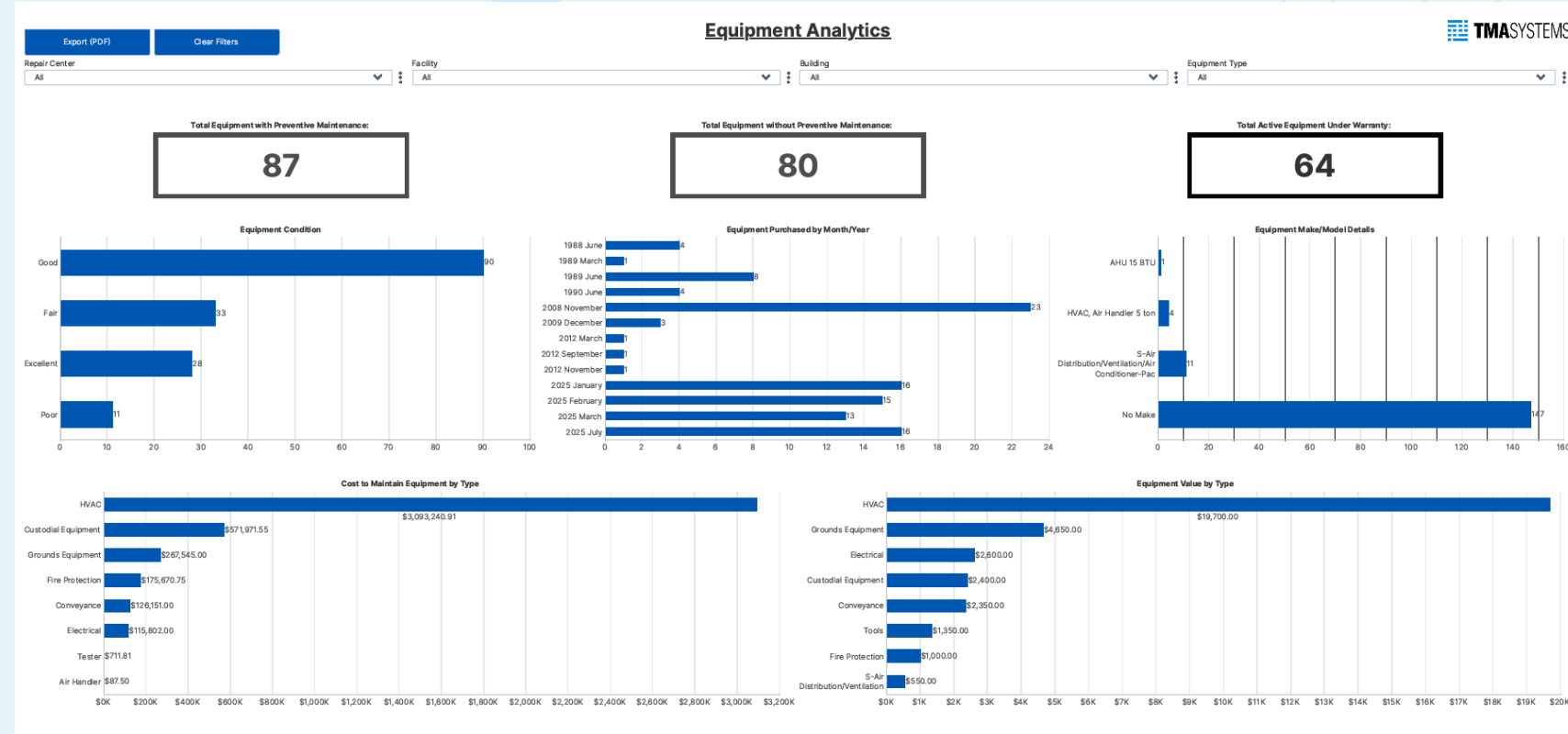
Purchasing Analytics

- Unauthorized PO's
- Open PO's
- Open PR's
- PR's Not Converted
- PO's Not Ordered
- Open PO's by Days
- PO Spend by Department
- PO Spend by Type
- Open PO's by Buyer
- PO's YoY Comparison
- Requisitions by Month
- PO's by Month
- Top vendor Spend



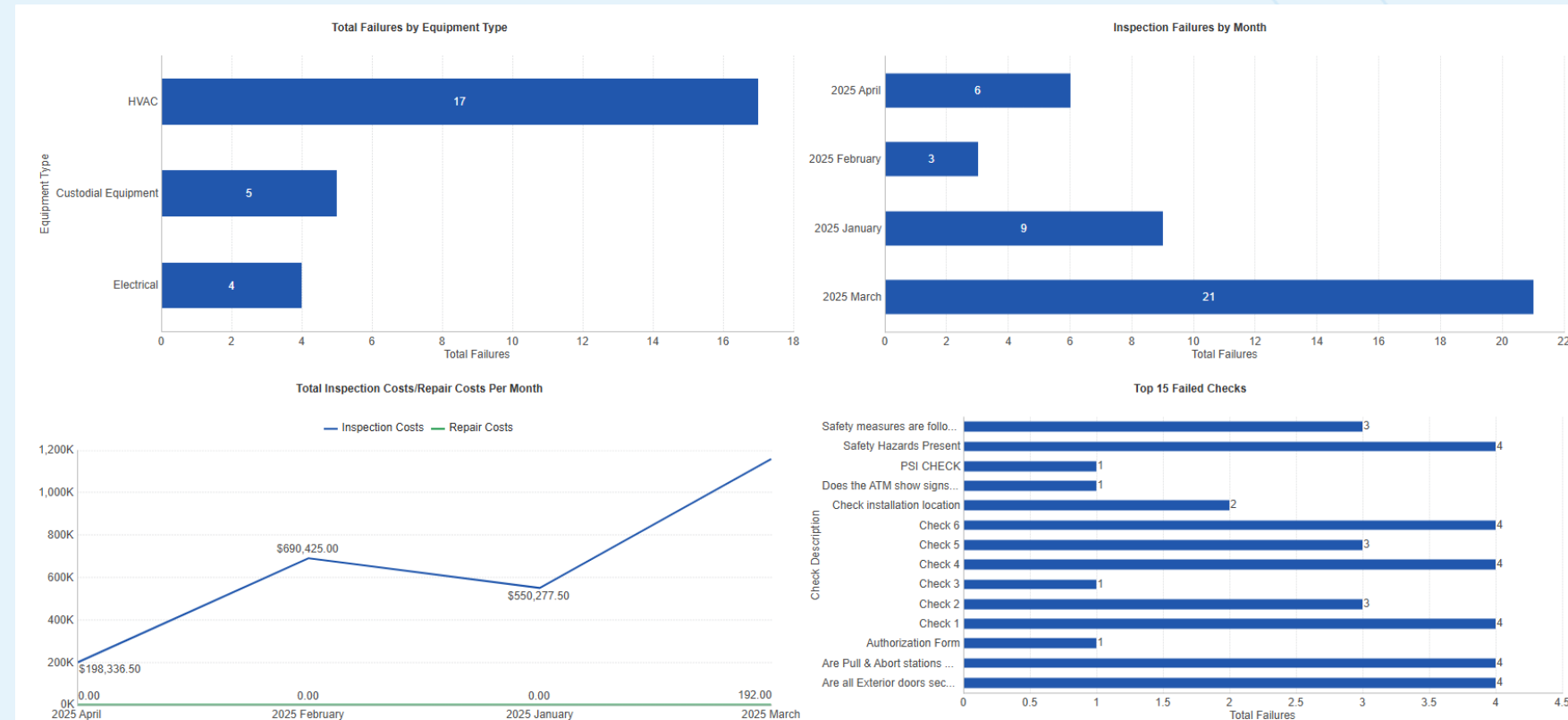
Equipment Analysis

- Total Equipment with PM Schedules
- Total Equipment without PM's
- Total Equipment under Warranty
- Equipment Condition
- Equipment purchased by Month/Year
- Equipment Make/Model Details
- Cost to Maintain by Type
- Equipment Value by Type



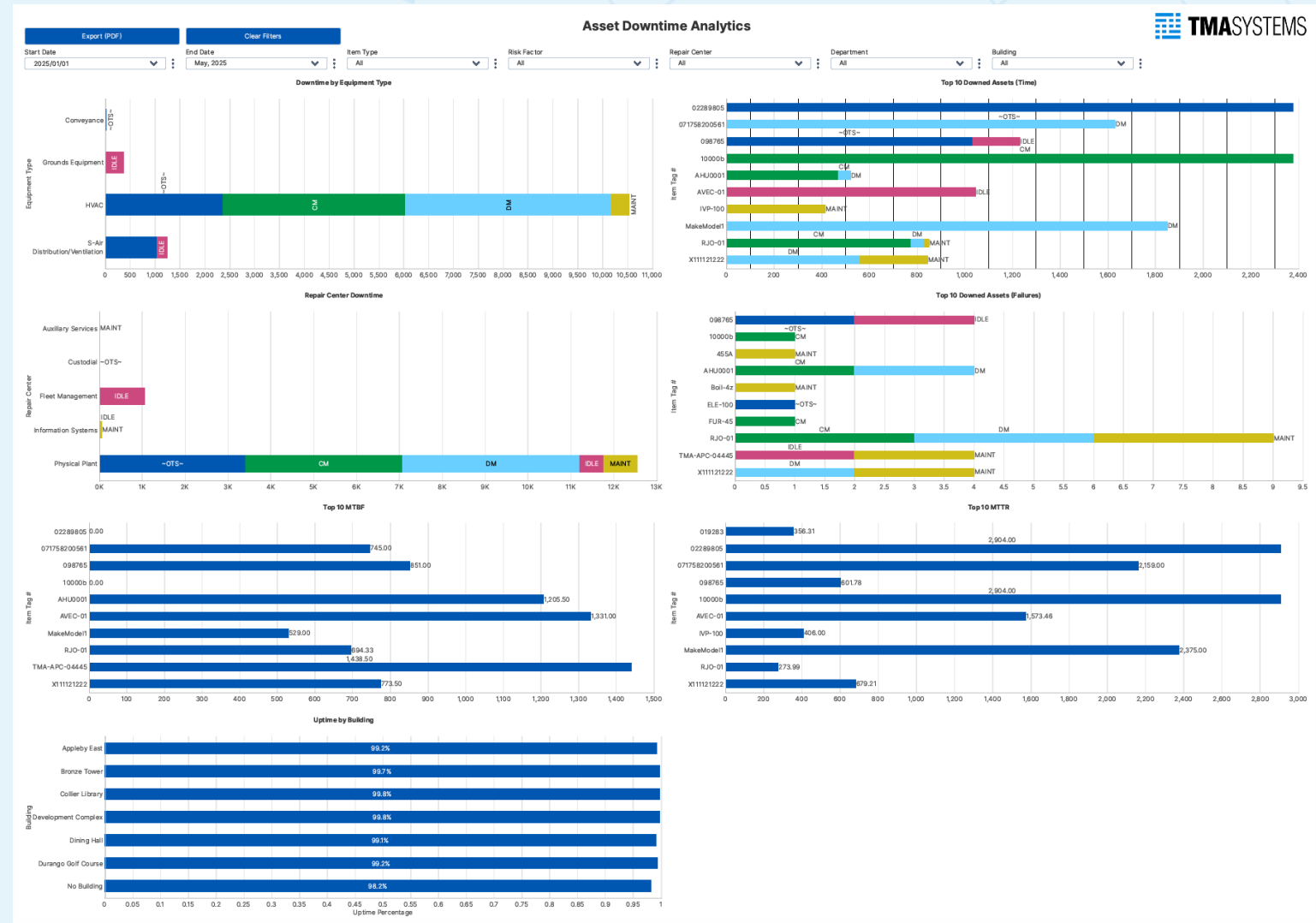
Inspections Analysis

- Open Work Orders with Inspections/Checks
- Open PM's with Inspections/Checks
- Total Failures
- Inspections completed on Time
- Total Failures by Equipment Type
- Inspection Failures by Month
- Total Repair Costs per Month
- Top 15 Failed Checks



Equipment/Asset Downtime

- Downtime by Type
- Top 10 Downed Assets (by time)
- Top 10 Downed Assets (by total failures)
- Top 10 Mean Time To Repair
- Top 10 Mean Time Between Failures
- Uptime Percentage by Building
- Total Repair Center Downtime



Now Let's Review the Analytics Dashboards in WebTMA



Thank You / Q&A

matthew.stenslie@tmasystems.com | tmasystems.com

UC
25 YEARS
OF COMMUNITY, PARTNERSHIP, AND GROWTH