

WebTMA's Embedded Analytics



HARD ROCK
CASINO & HOTELS

TULSA | MAR 30 – APR 02



Agenda

Introduction to Embedded Analytics 1

Additional Features 2

Review Dashboards 3

Customized Dashboards 4

Value Proposition 5

Live Demonstration 6

Thanks 7



01. How does your organization currently use data for operational or facility decisions?

- a. We rely heavily on data and reporting
- b. We use some data, but it's limited or manual
- c. We rely mostly on manual processes or intuition
- d. Not sure



Introduction

- Utilizing Embedded Analytics allows you to see your data for different Categories or Filters without having to create a specific Report or Dashboard in WebTMA.
- Also, with embedded analytics you can “slice” the data via the filtering options to quickly change the data displayed in the Charts and drilldowns without having to rerun a report.
- TMA does all the heavy lifting. We have already built and designed the dashboards



Features

- The Logi Analytics window is designed in WebTMA7's new User Interface
- You can export the entire page to PDF with the click of a button. Easy presentations!
- You can export all the raw data into Excel for any further analysis
- Can be branded with your logo
- Each Dashboards has a set of filters such as Start/End Dates, Repair Center, Department, Building, Trade, WO Type, etc. Meaning you can immediately parse the data however you want to see it
- TMA has already built a set of dashboards and will continue adding based on client needs and feedback
- Can drill down multiple levels, all the way to individual records



ADDITIONAL
FEATURES



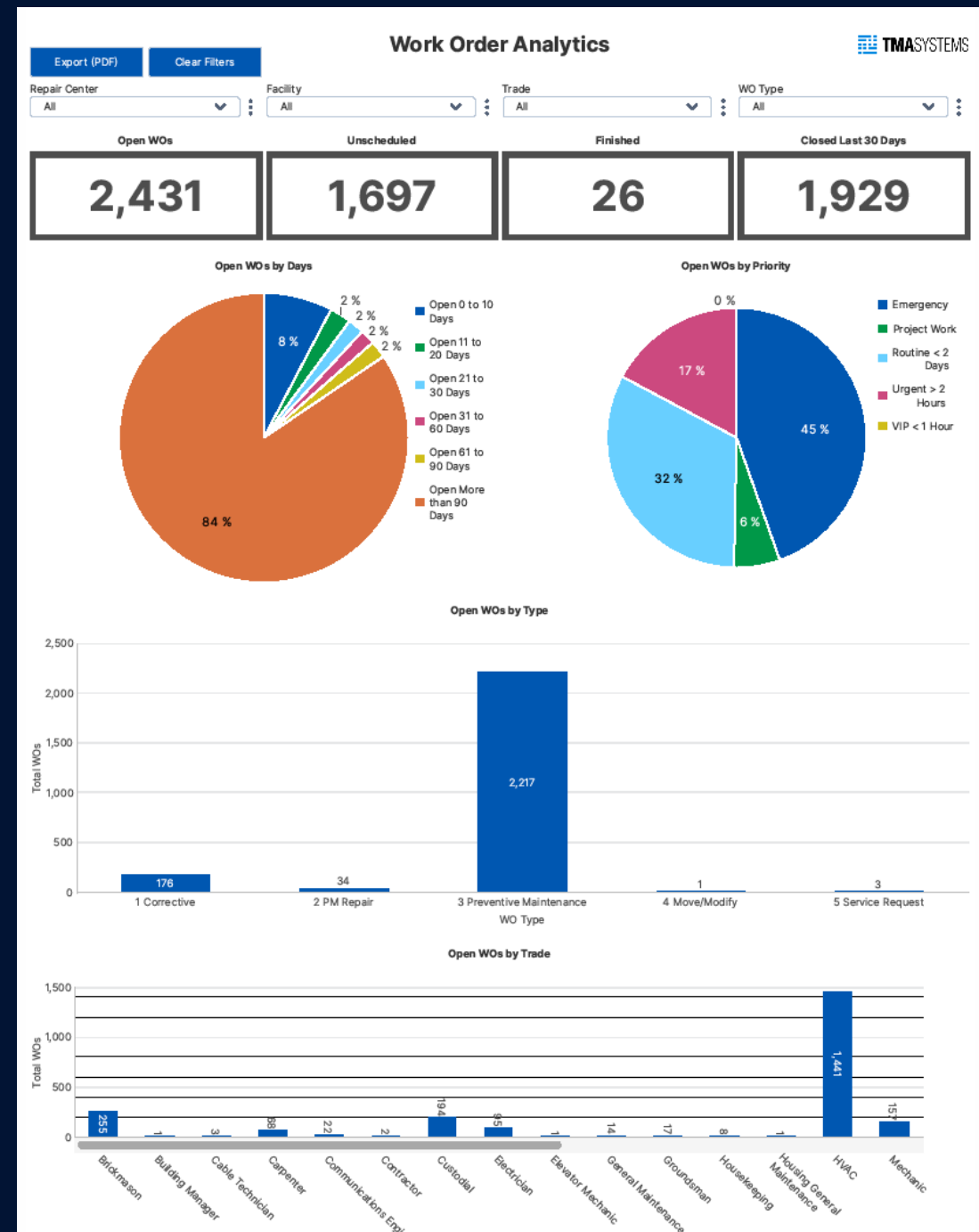
02.

What is your biggest challenge with reporting today?

- a. Data is spread across multiple systems
- b. Reports are manual or time-consuming
- c. We rely too much on IT or analysts
- d. Data is not real-time or up-to-date
- e. Limited visibility into operations
- f. Other

Work Order Analytics

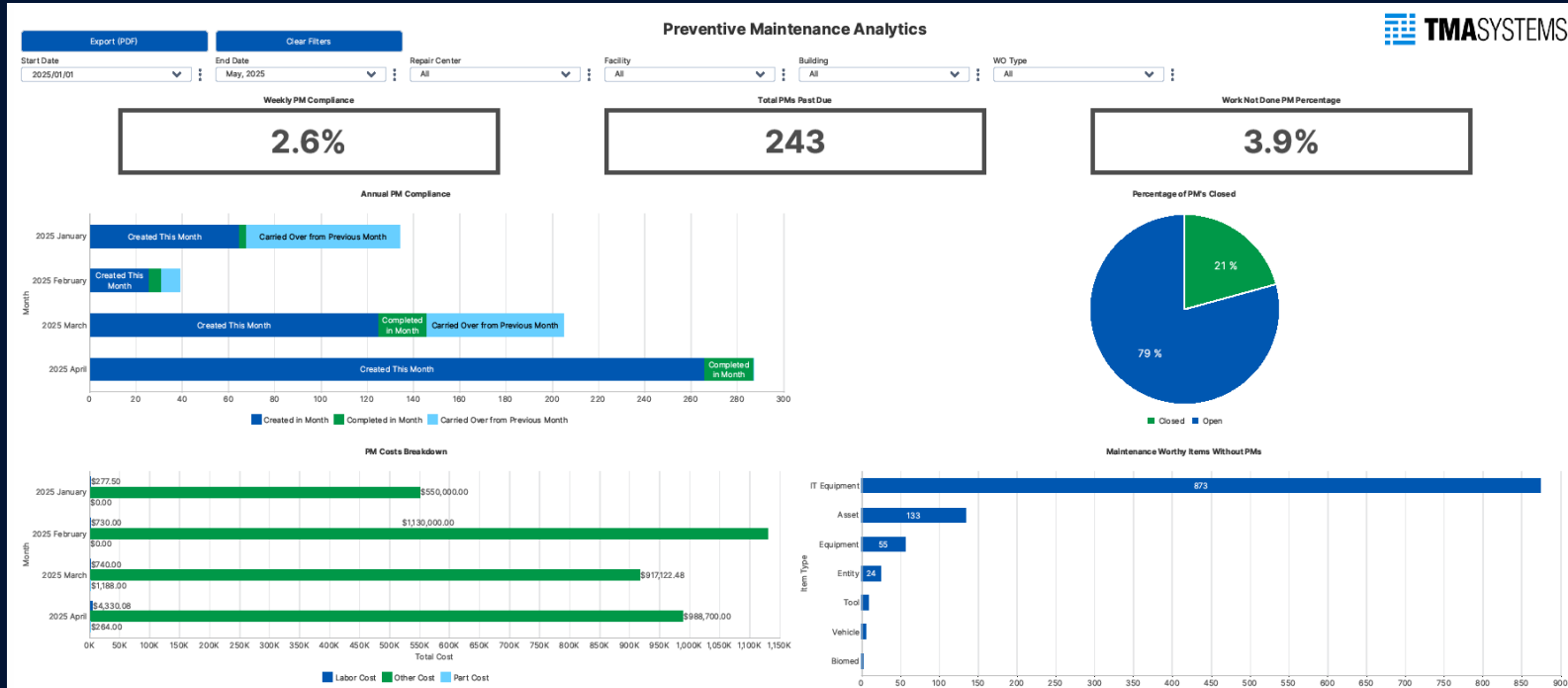
- All Open WO's
- Unscheduled WO's
- Finished WO's
- Closed Last 30 Days
- Open WO's by Days
- Open WO's by Priority
- Open WO's by Type
- Open WO's by Trade





Preventive Maintenance

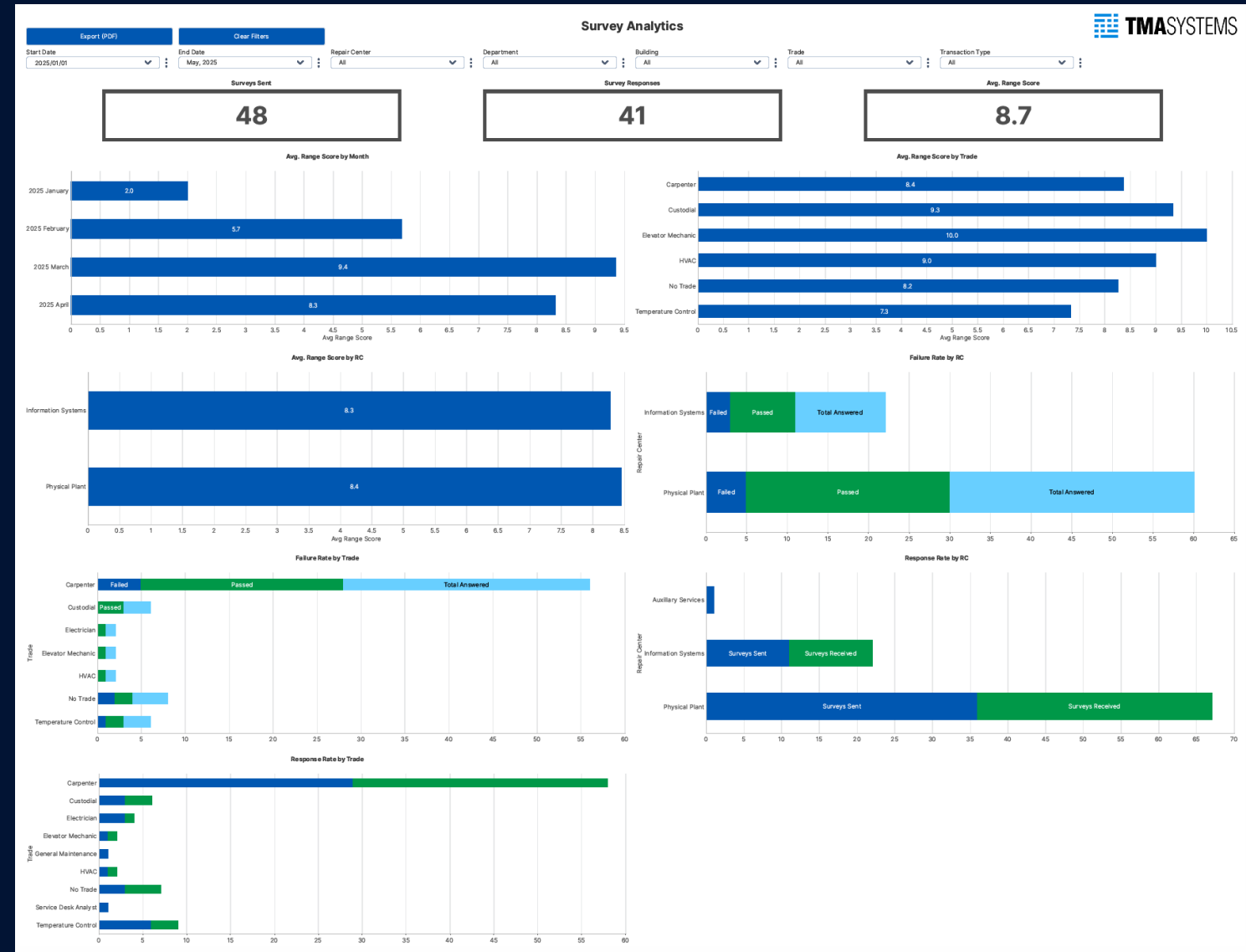
- Weekly PM Compliance
- Monthly PM Compliance
- Annual PM Compliance
- Past Due PM's
- Work Not Percentage
- Percentage of PM' Open/Closed
- PM Costs Breakdown
- MWI's without PM's





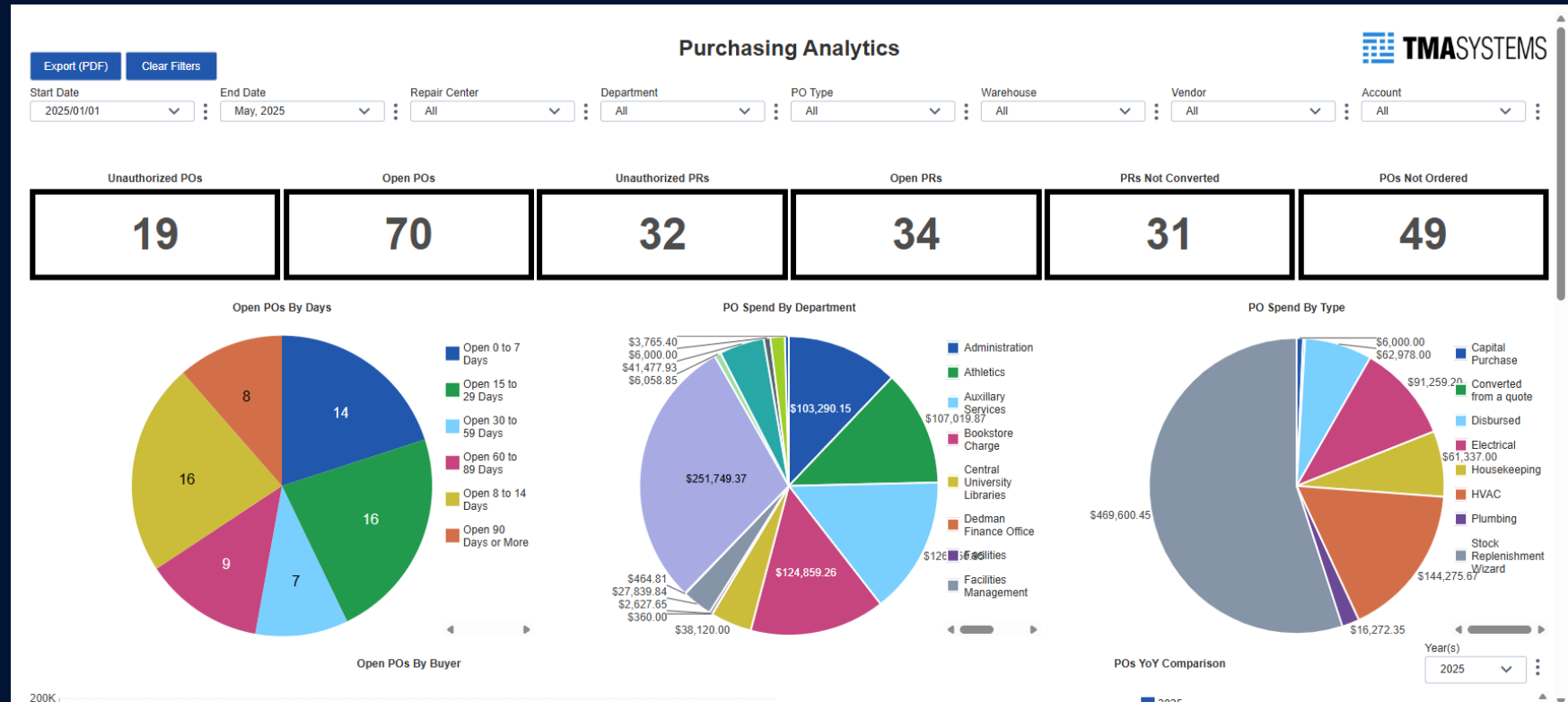
Customer Surveys

- Surveys Sent/Surveys Responded
- Average Survey Score
- Average Score by Month
- Average Score by Trade
- Average Score by Repair Center
- Failure Rate by Trade
- Failure Rate by RC
- Response Rate by Trade



Purchasing

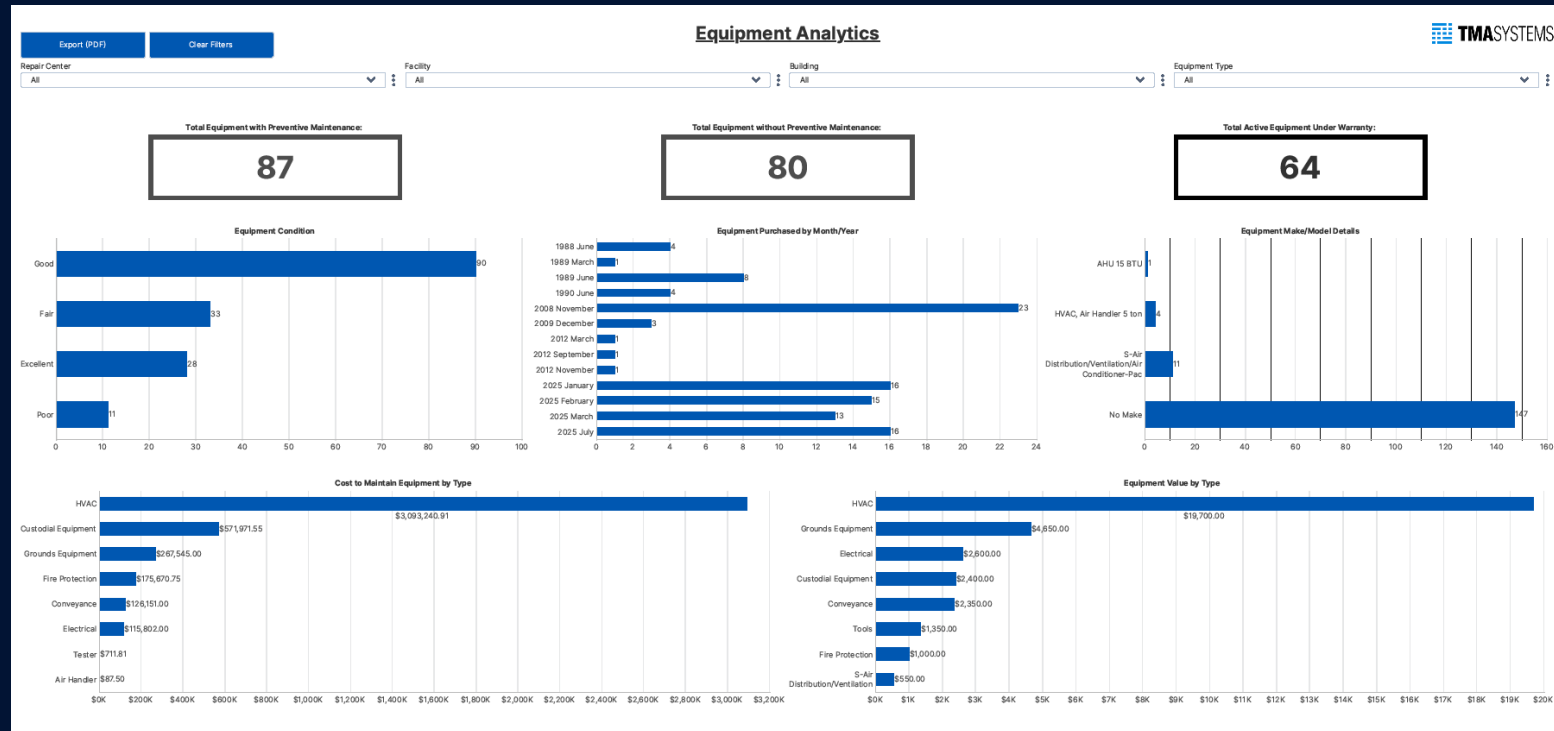
- Unauthorized PO's
- Open PO's
- Open PR's
- PR's Not Converted
- PO's Not Ordered
- Open PO's by Days
- PO Spend by Department
- PO Spend by Type
- Open PO's by Buyer
- PO's YoY Comparison
- Requisitions by Month
- PO's by Month
- Top vendor Spend





Equipment

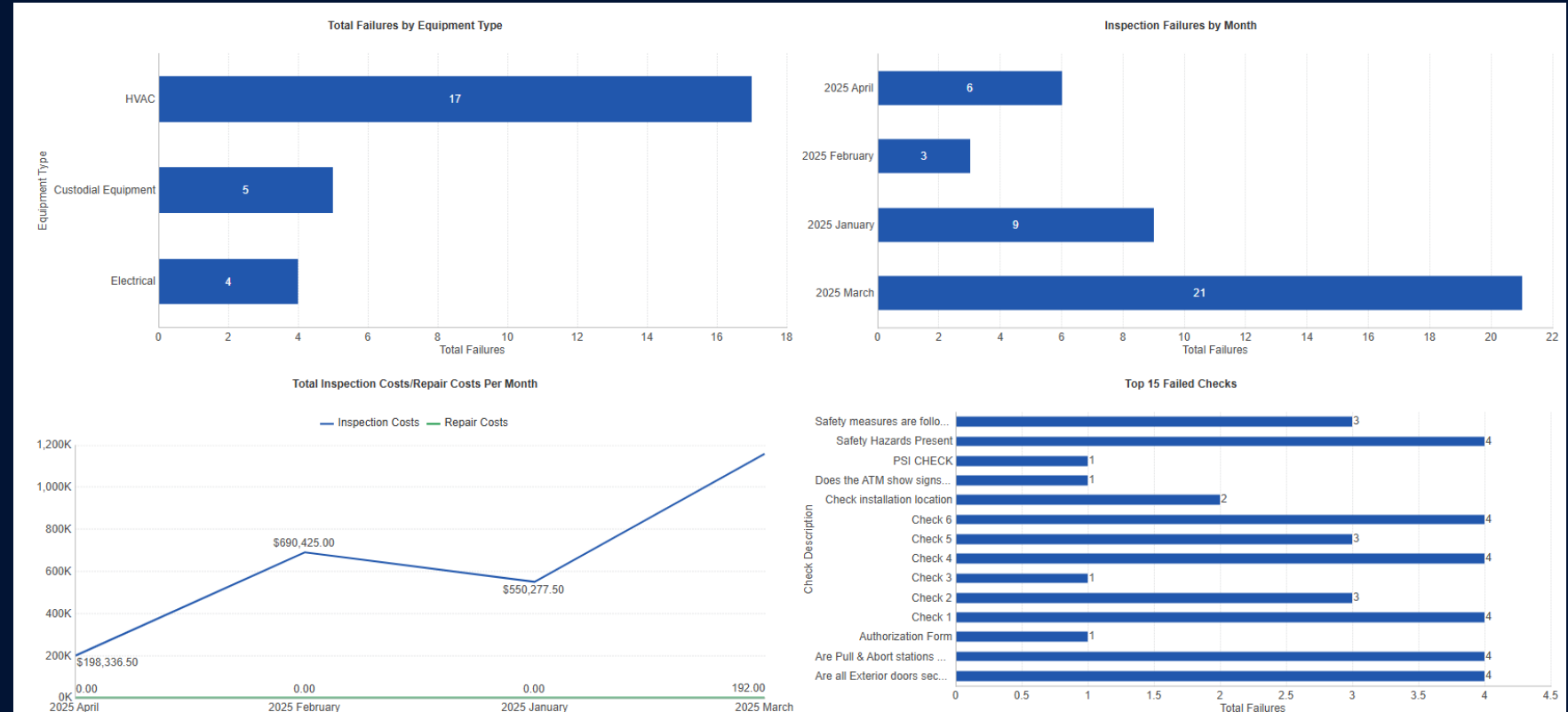
- Total Equipment with PM Schedules
- Total Equipment without PM's
- Total Equipment under Warranty
- Equipment Condition
- Equipment purchased by Month/Year
- Equipment Make/Model Details
- Cost to Maintain by Type
- Equipment Value by Type





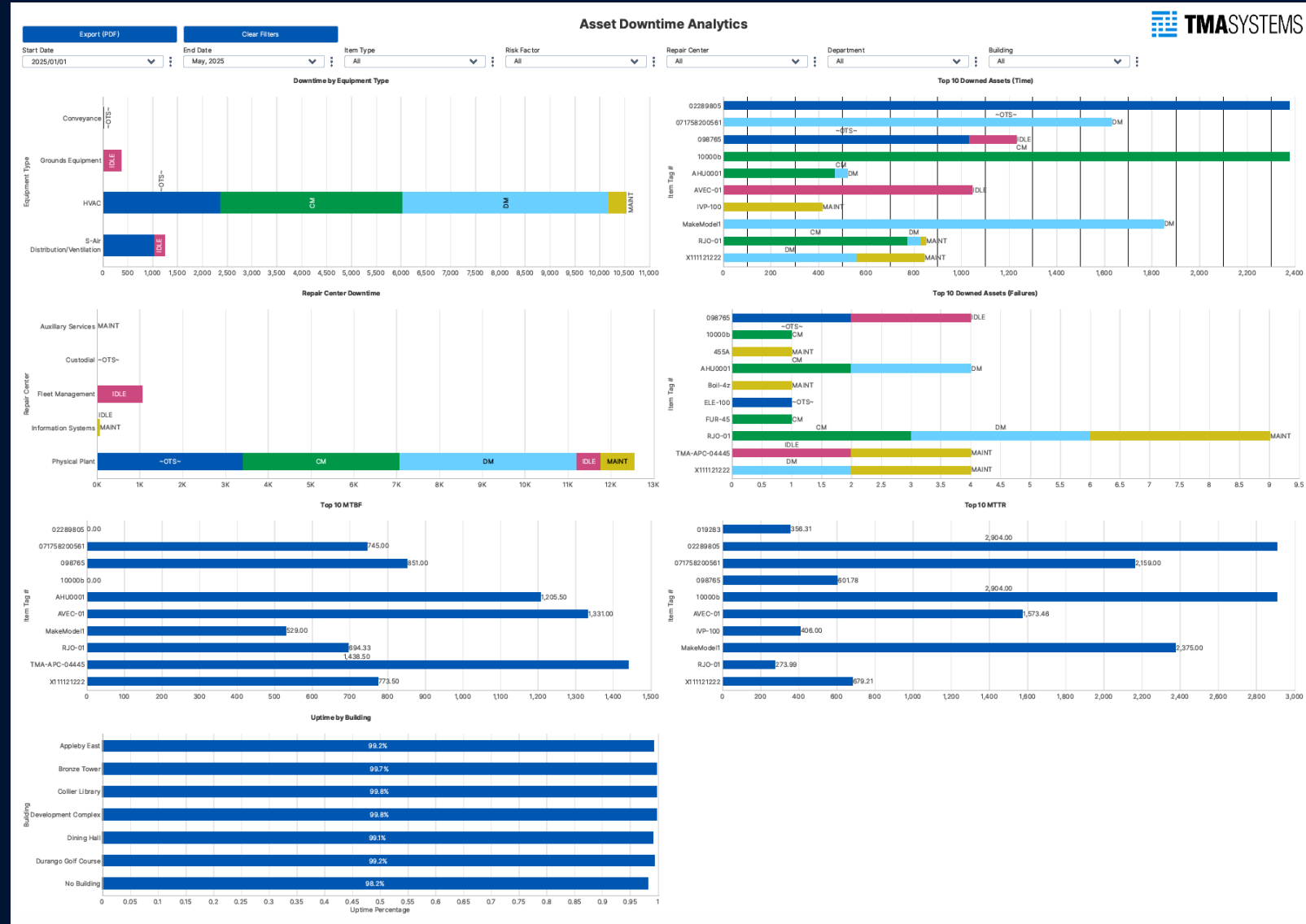
Inspections

- Open Work Orders with Inspections/Checks
- Open PM's with Inspections/Checks
- Total Failures
- Inspections completed on Time
- Total Failures by Equipment Type
- Inspection Failures by Month
- Total Repair Costs per Month
- Top 15 Failed Checks



Downtime

- Downtime by Type
- Top 10 Downed Assets (by time)
- Top 10 Downed Assets (by total failures)
- Top 10 Mean Time To Repair
- Top 10 Mean Time Between Failures
- Uptime Percentage by Building
- Total Repair Center Downtime





03.

How do you currently access reporting for your WebTMA data?

- a. Built-in WebTMA reports
- b. External tools (e.g., Power BI, Excel)
- c. A mix of both
- d. We don't actively use reporting
- e. Not sure



Customized Dashboards

- The best dashboards come from you, the customers/users
- With every purchase of the Embedded Analytics module, TMA will create a 1 custom dashboard/report to your spec at **NO COST**
- Every client who signs up for Embedded Analytics increases the value of the product. 50 new customers = 50 new dashboards/reports that are available for all to use, in addition to the ones created by TMA
- No matter how many reports/dashboards become available to customers, the price of the module will stay the same
- We welcome you to work with us on your needs, and/or work with us and other groups of clients to design your dashboards!





Value Proposition

1. We produce advanced analytics and make them available to use with your WebTMA7 data set. TMA does the heavy lifting.
2. With purchase of the Embedded Analytics module, you get all the pre-made dashboards, any new dashboards TMA creates, plus your own custom designed dashboard for your specific needs
3. The value of the module continues to increase as more dashboards are built
4. Many of the KPI's are not accessible through the front-end of the application
5. Better data = better decision making.

BENEFITS OF DATA-DRIVEN DECISION MAKING





04.

How long does it typically take to get the data or report you need?

- a. Real-time / instantly
- b. Same day
- c. 1-3 days
- d. Several days or longer
- e. Not sure

Demo / Q&A



HARD ROCK
CASINO & HOTELS

TULSA | MAR 30 – APR 02



05.

How interested is your organization in adopting or expanding Embedded Analytics in WebTMA?

- a. Actively evaluating / planning adoption
- b. Interested – want to learn more
- c. Curious but not a priority
- d. Not a priority right now
- e. Not relevant for us

Thank you



HARD ROCK
CASINO & HOTELS

TULSA | MAR 30 – APR 02